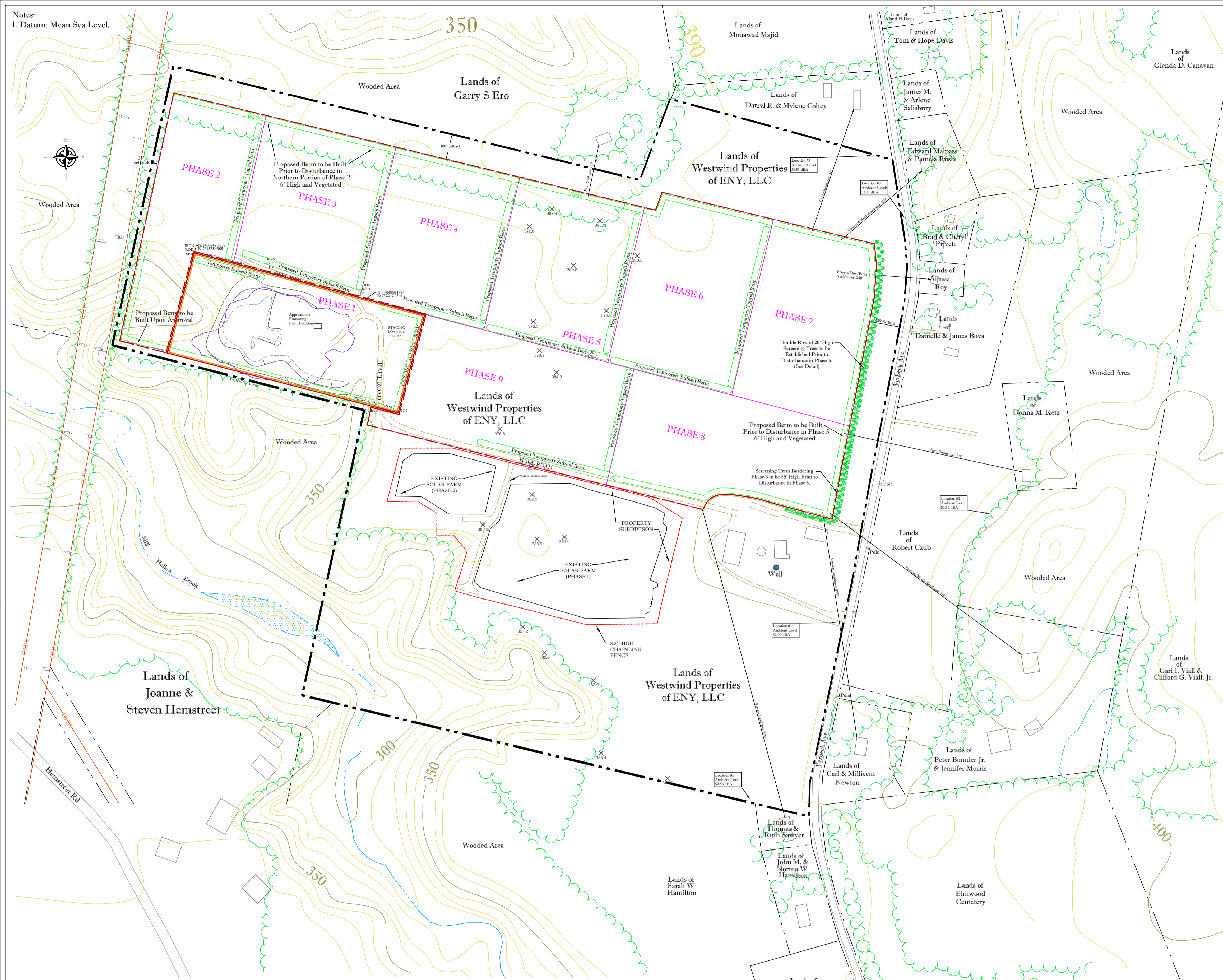


Notes:
1. Datum: Mean Sea Level.

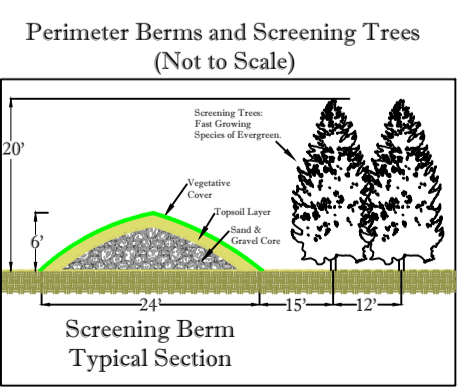


LEGEND

- 740 — EXISTING 10' CONTOUR LINE
- 750 — EXISTING 50' CONTOUR LINE
- - - - - EDGE OF GRAVEL/DIRT ROAD
- - - - - EDGE OF PAVEMENT
- - - - - EDGE OF WATER
- OHW — CHW — OVERHEAD WIRES
- - - - - APPROX. PROPERTY LINE
- - - - - LIFE OF MINE BOUNDARY
- UTILITY POLE
- TREE/BRUSH LINE
- CREST LINE
- TOE LINE
- EDGE OF STRIPPING
- BERM
- PHASING BOUNDARY LINES
- PROPOSED PLANT LOCATION
- PHOTO LOCATION
- BUILDING
- WELL

ACREAGE SUMMARY

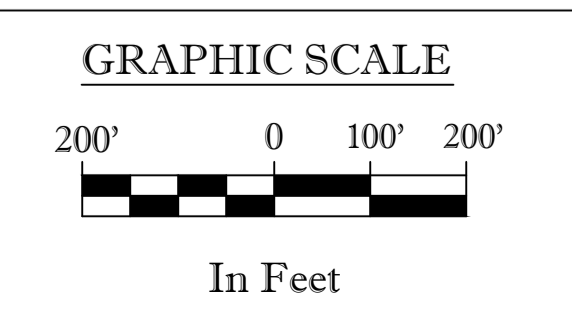
- Total acreage permitted by DEC prior to this application: **8.62 ± acres.**
- Total acreage proposed to be added to the Life of Mine: **62.39 ± acres.**
- Total acreage proposed to be affected by mining over the Life of Mine: **71.01 ± acres.**
- Total acreage affected since April 1, 1975: **8.62 ± acres.**



DATE	BY	REVISIONS
10/23/17	BGN	Revise for RFAL
1/25/18	BGN	Remove Solar Farm Area from LOM.
1/10/20	BAN/BGN	Revise for requested revisions by Dept.

CONTOUR INTERVAL: 10'
SCALE: 1" = 200'
DESIGNED BY: BGN
SEPTEMBER 2, 2016

BASE MAPS:
1. Mining Plan Map, AEG, LLC, 2016.
2. U.S.G.S. 7.5 min. Schaghticoke Quadrangle.
3. Mining Plan Map, Spectra Environmental Group, 5/5/04.
4. Survey of Lands of James A. Bova & Victoria A. Bova, William A. Wiley, 3/24/89.
5. Town of Schaghticoke Tax Map Section 022.00, 07/23/76, last revised 11/01/2014.
6. Aerial Photography from Google Maps, Accessed 2016.



NOISE ATTENUATION MAP
for
New York State Department of Environmental Conservation

WestWind Ag, LLC
WEST WIND FARMS
Town of Schaghticoke, Rensselaer County, New York
Mine ID#: 40836 DEC ID#: 4-3842-00110/00002