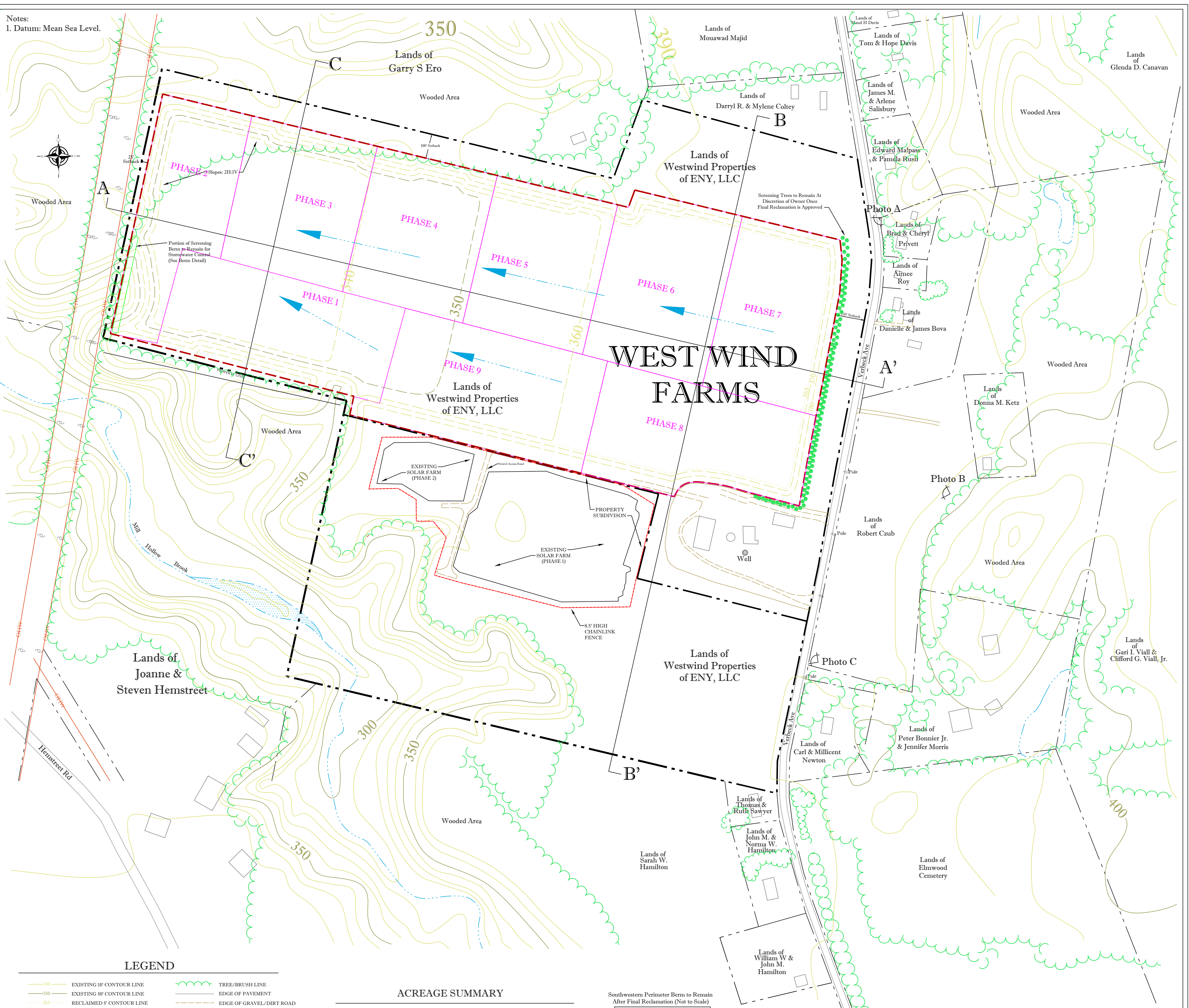


Notes:  
1. Datum: Mean Sea Level.

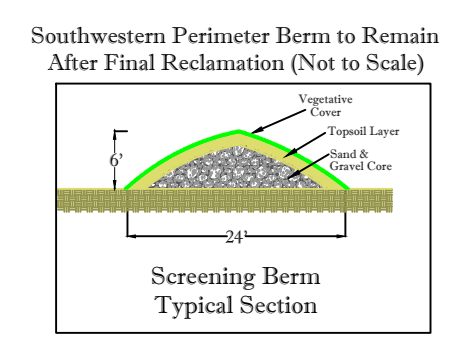


**LEGEND**

- EXISTING 10' CONTOUR LINE
- EXISTING 50' CONTOUR LINE
- RECLAIMED 5' CONTOUR LINE
- RECLAIMED 10' CONTOUR LINE
- RECLAIMED 50' CONTOUR LINE
- APPROX. PROPERTY LINE
- LIFE OF MINE BOUNDARY
- PHOTO LOCATION/ORIENTATION
- BUILDING
- TREE/BRUSH LINE
- EDGE OF PAVEMENT
- EDGE OF GRAVEL/DIRT ROAD
- EDGE OF WATER
- DIRECTION OF DRAINAGE
- BERM
- OVERHEAD WIRES
- PHASING BOUNDARY LINES
- WELL
- UTILITY POLE

**ACREAGE SUMMARY**

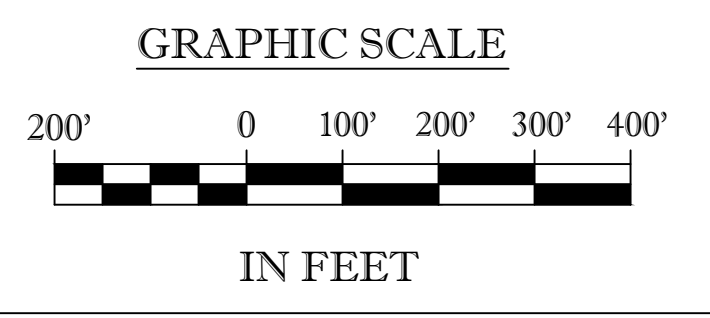
Total acreage to be reclaimed over the Life of Mine: 71.01± acres.



| DATE    | BY  | REVISIONS                         |
|---------|-----|-----------------------------------|
| 7/30/14 | EFC | Update for NOIA response.         |
| 2/12/17 | BGN | Update for Draft EIS.             |
| 1/25/18 | BGN | Remove solar farm areas from LOM. |
| 3/26/19 | BGN | Revise for NOIA.                  |

CONTOUR INTERVAL: 10'  
SCALE: 1" = 200'  
DESIGNED BY: BAN & PRK  
JUNE 1, 2012

**BASE MAPS:**  
1. U.S.G.S. 7.5 min. Schaghticoke Quadrangle.  
2. Mining Plan Map, Spectra Environmental Group, 5/5/04.  
3. Survey of Lands of James A. Bova & Victoria A. Bova, William A. Wiley, 3/24/89.  
4. Town of Schaghticoke Tax Map Section 022.00, 07/23/76, last revised 11/01/2014.  
5. Aerial Photography from Google Maps, Accessed 2016.



**RECLAMATION PLAN MAP**  
for  
New York State Department of  
Environmental Conservation  
**WestWind Ag, LLC**  
**WEST WIND FARMS**  
Town of Schaghticoke, Rensselaer County, New York  
Mine ID#: 40836 DEC ID#: 4-3842-00110/00002

C:\Documents\Clear\WestWind Ag, LLC\WestWind Farm\DEC\_Expansions\_Map\_06-2012\04102\_Rev01\_Application\_4th\_Submittal\_1-10\_00Map & Section\WVF DEC\_2012 04102\_RPM (1-10-20)